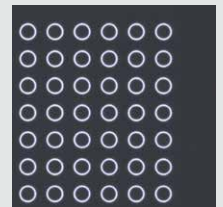
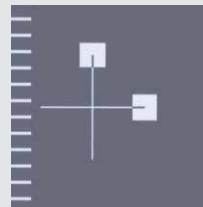


ULTRA

THE SEMICONDUCTOR MASK WRITER



ULTRA

THE SEMICONDUCTOR MASK WRITER

The ULTRA technology has evolved from our well-established line of Volume Pattern Generators and is designed and optimized specifically for the production of mature semiconductor photomasks. Key characteristics of the ULTRA are its speed, the advanced data path, high precision, and structure uniformity, as well as the sophisticated, extremely accurate alignment features. The ULTRA represents an economical solution with low cost of ownership. With its modern, compact build, it is easily incorporated into an existing mask shop infrastructure.

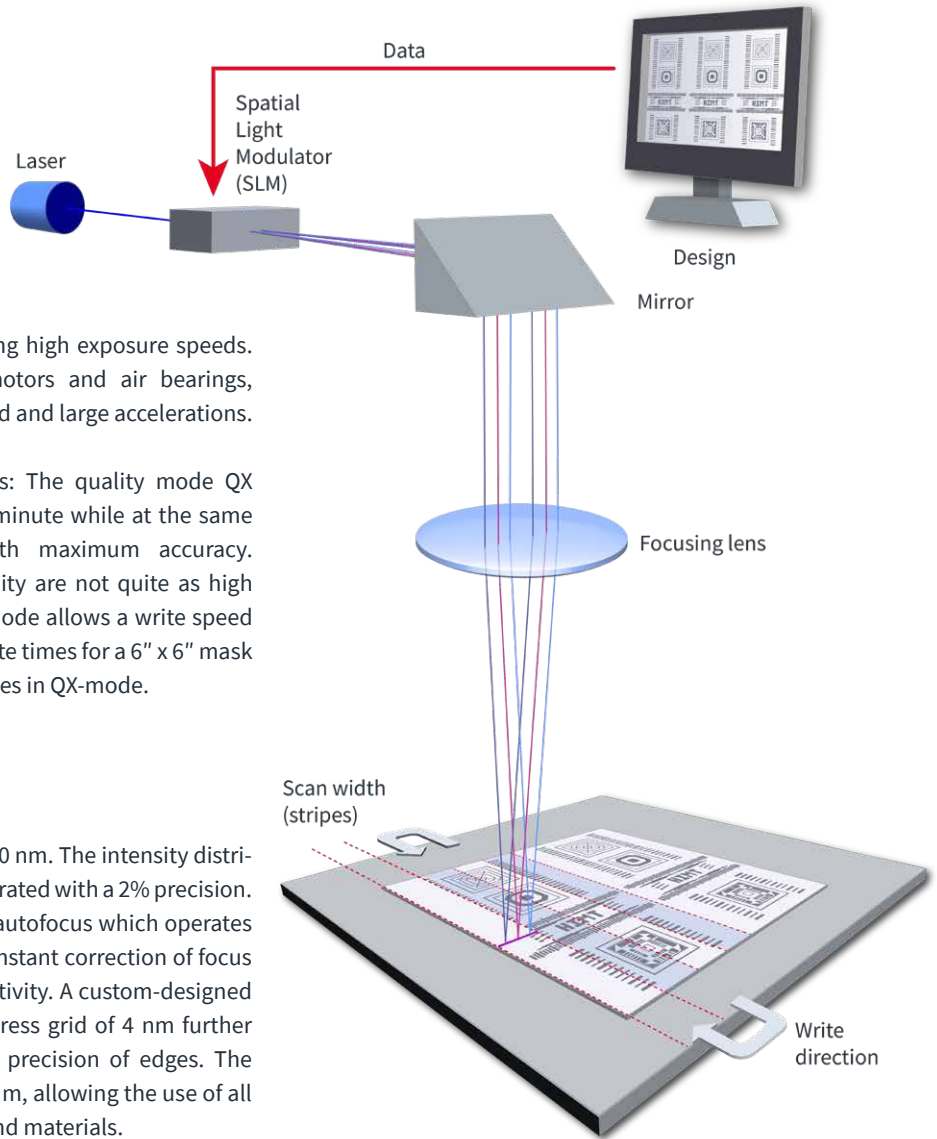
HIGH THROUGHPUT

For maximum throughput and image quality, the system features two powerful high-speed Spatial Light Modulators (SLM) set up in a finely tuned physical arrangement. The ULTRA's high-speed data path is designed to handle even complex geometries and dense patterns while upholding high exposure speeds. The stage is equipped with linear motors and air bearings, ensuring smooth travel even at top speed and large accelerations.

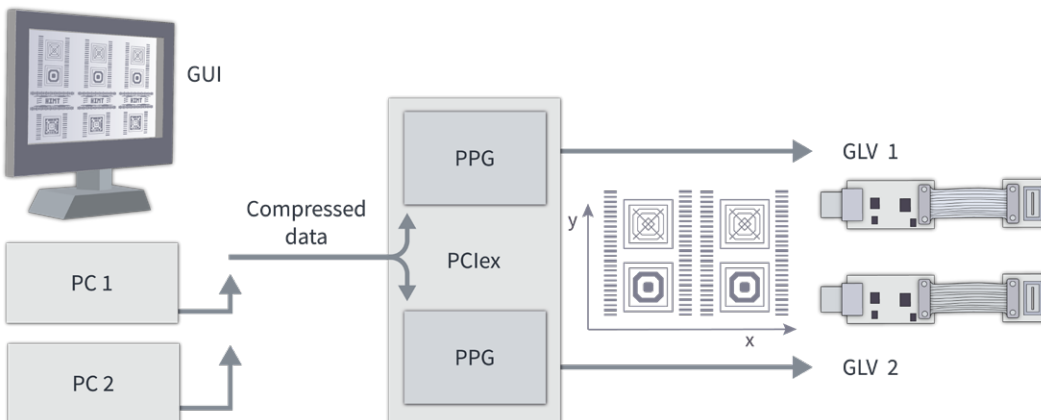
The ULTRA provides two speed modes: The quality mode QX reaches a write speed of 325 mm² per minute while at the same time achieving exposure results with maximum accuracy. If requirements on resolution and quality are not quite as high and the focus is on speed, the fast FX-mode allows a write speed of up to 580 mm² per minute. Typical write times for a 6" x 6" mask are 45 minutes in FX-mode and 75 minutes in QX-mode.

CD UNIFORMITY

The ULTRA provides a CD uniformity of 30 nm. The intensity distribution of each SLM is automatically calibrated with a 2% precision. Focus control is achieved by an optical autofocus which operates through the main write lens, providing instant correction of focus at the location of writing and high sensitivity. A custom-designed objective with an NA of 0.9 and an address grid of 4 nm further contribute to structure uniformity and precision of edges. The entire optical path is optimized for 355 nm, allowing the use of all i-line resists and associated processes and materials.



Exposure strategy



High-speed data path

MINIMUM FEATURE SIZE

A custom-designed and integrated write lens with high NA enables the ULTRA to expose structure sizes of down to 500 nm. In fact, any aberrations are smaller than the airy disc, that is, the performance of the objective is purely diffraction-limited.

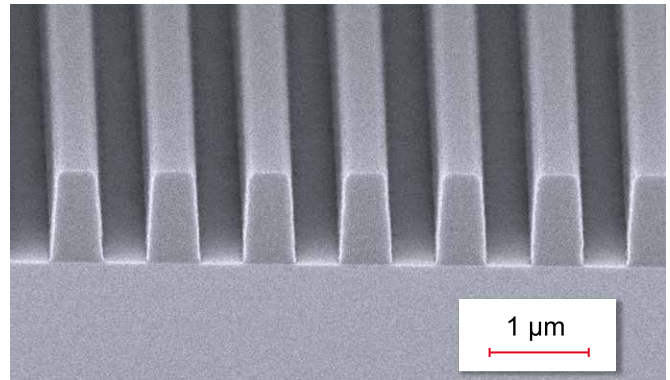
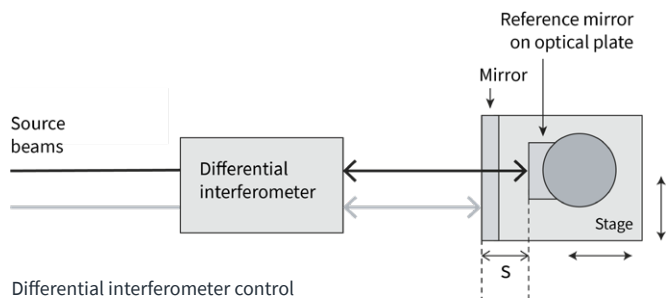


Image courtesy of IMS Chips

OVERLAY

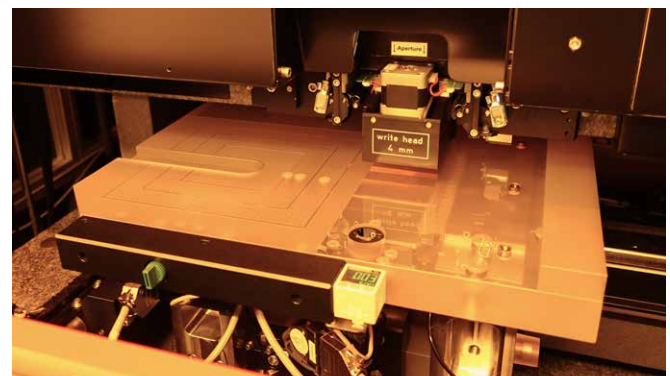
A differential interferometer with 1.2 nm resolution controls stage motion for maximum precision and overlay accuracy. The ULTRA flowbox maintains a stable temperature to within ± 0.02 K. Crucially, the stage and chuck are made of Zerodur™ which exhibits zero temperature expansion. All these factors, along with the beam stabilization, result in an overlay of 30 nm.



Differential interferometer control



Special chuck layout with 3-point support and minimum contact, guarantees high reproducibility



Zerodur stage and chuck

2ND LAYER ALIGNMENT

The ULTRA's custom-designed write lens is optimized and corrected not only for 355 nm, but also for 640 nm, the illumination wavelength used by the camera to locate and detect alignment markers. Minimal optical aberration during image acquisition means that the camera image exhibits maximum dimensional consistency. This facilitates the 2nd layer alignment value of 100 nm.

Precise 2nd layer alignment, which is crucial in the production of phase shift masks (PSM), is achieved by a sophisticated algorithm that measures and compensates first layer distortions or irregularities: The complex matrix corrects for pattern deviations between adjoining design fields while at the same time, linear distortion correction extrapolates within the fields to compensate for x- and y-scale errors as well as rotation, translation, and orthogonality errors. All corrections and compensations are carried out at full exposure throughput.

COST EFFECTIVENESS

The ULTRA is equipped with a 355 nm DPSS ultraviolet laser source which is qualified for typical semiconductor photoresists. With its excellent TEM_{00} mode quality, long-term performance, and low running cost it is the perfect light source for a 24/7 precision manufacturing tool. In comparison to gas lasers (such as Kr⁺ and Ar⁺), the DPSS laser reduces the costs by up to 80%, taking into account electricity for laser and cooler as well as the cost for refurbishment or replacement. The DPSS UV laser is very reliable with 20,000 hours of guaranteed lifetime. An exchange of the laser is typically required every 2 to 3 years and it takes no more than two days to complete the exchange. All in all this amounts to a significantly maximized equipment uptime.

ULTRA

SYSTEM SPECIFICATIONS

	QX mode	FX mode
Writing performance		
Address grid [nm]	4	10
Line edge roughness [3 σ , nm]	20	40
Position accuracy [3 σ , nm]	40	100
Overlay [3 σ , nm]	30	60
Stitching [3 σ , nm]	20	60
2nd layer alignment [max error /nm]	100	100
CD uniformity [3 σ , nm]	30	60
Minimum feature size [nm]	500	700
Write speed [mm ² / min]	325	580
Write time for 6" x 6" [min]	75	45
Operation		
Protocols, standards	SECS / GEM protocols	
User interface (software)	SEMI-compliant GUI	
Maximum write area	228 x 228 mm ²	
Substrate size	4", 5", 6", 7", and 9" masks (larger and other substrates on request)	
System features		
Optics	<ul style="list-style-type: none"> • 0.9 NA objective lens • Low-distortion UV optics • Automatic calibration routines 	
Laser	<ul style="list-style-type: none"> • 355 nm high-power solid state laser • Highly economical compared to gas laser 	
Focus system	<ul style="list-style-type: none"> • Real-time optical autofocus 	
Alignment	<ul style="list-style-type: none"> • Camera system • Distortion compensation • Field-by-field alignment • Edge detector 	
Data path	<ul style="list-style-type: none"> • Real-time compression • Scalable hardware concept • Input formats: All standard formats, e.g. GDSII and Jobdeck 	
Spatial Light Modulator	<ul style="list-style-type: none"> • Frequency 350 kHz • Data rate 2.4 GB/s 	
Loader	<ul style="list-style-type: none"> • Automatic mask loader with two independent carrier stations 	



Tel: +86-512-62529622

Fax: +86-512-62522966

苏州工业园区北摆宴街8号
恒润商务大厦一楼A-3



www.stella-litho.com

联系人: 江俊葳 先生 / Wesley
移动电话: +86 186 0621 7371
Email: wesley@stella-litho.com



联系人: 邱重铠 先生 / CK
移动电话: +86 180 3682 6293
Email: ckchiu@stella-litho.com

